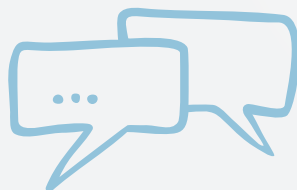


What determines reasonable and necessary supports?



Goals, objectives and aspirations

The support must help the participant to pursue their goals, objectives and aspirations.



Social and economic participation

The support must allow the participant to take up activities that will assist them in their pursuit of social and economic participation.



Value for money

The support must exhibit value for money where the costs are reasonable in terms of both the benefits achieved and the cost of alternative support.



Effective and beneficial

The support will be, or is likely to be, effective and beneficial for the participant, taking into consideration current good practice.



Expectations of families, carers, informal networks and the community

The support needs to take into account what is reasonable to expect families, carers, informal networks and the community to provide.



Most appropriate funding source

The support is most appropriately funded or provided through the NDIS. It is not more appropriately funded or provided through other general systems of service delivery or support services offered by a person, agency or body.

Source: The information contained in this fact sheet has been summarised from the NDIS Act 2013, Section 34.